

DAISY-28X1-W

~50° wide beam. Variant with 4X1 lenses.

TECHNICAL SPECIFICATIONS:

Dimensions	1140.0 x 40.0 mm
Height	20.2 mm
Fastening	pin, screw, clips
ROHS compliant	yes ⓘ

MATERIAL SPECIFICATIONS:

Component	Type	Material	Colour	Finish
C16588_DAISY-4X1-W	Linear lens	PMMA	clear	
C17482_DAISY-28X1-SHD-WHT-MATT	Shade		white	matt
C17527_DAISY-28X1-SHD-MET	Shade	PC-ABS	metal	gloss
C17537_DAISY-28X1-SHD-MET-MATT	Shade	PC	metal	matt
C16585_DAISY-28X1-SHD	Shade	PC-ABS	black	gloss
C16783_DAISY-28X1-SHD-WHT	Shade	PC	white	gloss
C17481_DAISY-28X1-SHD-MATT	Shade		black	matt

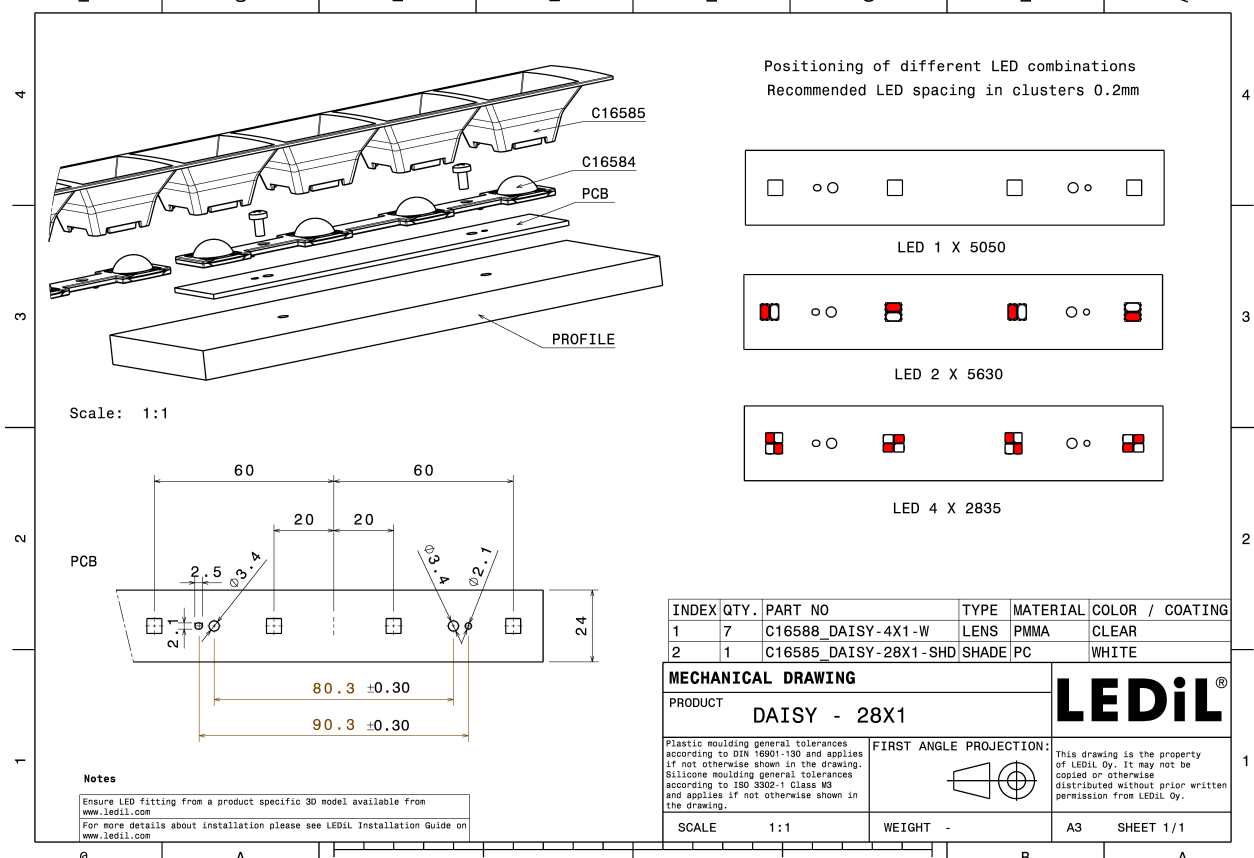
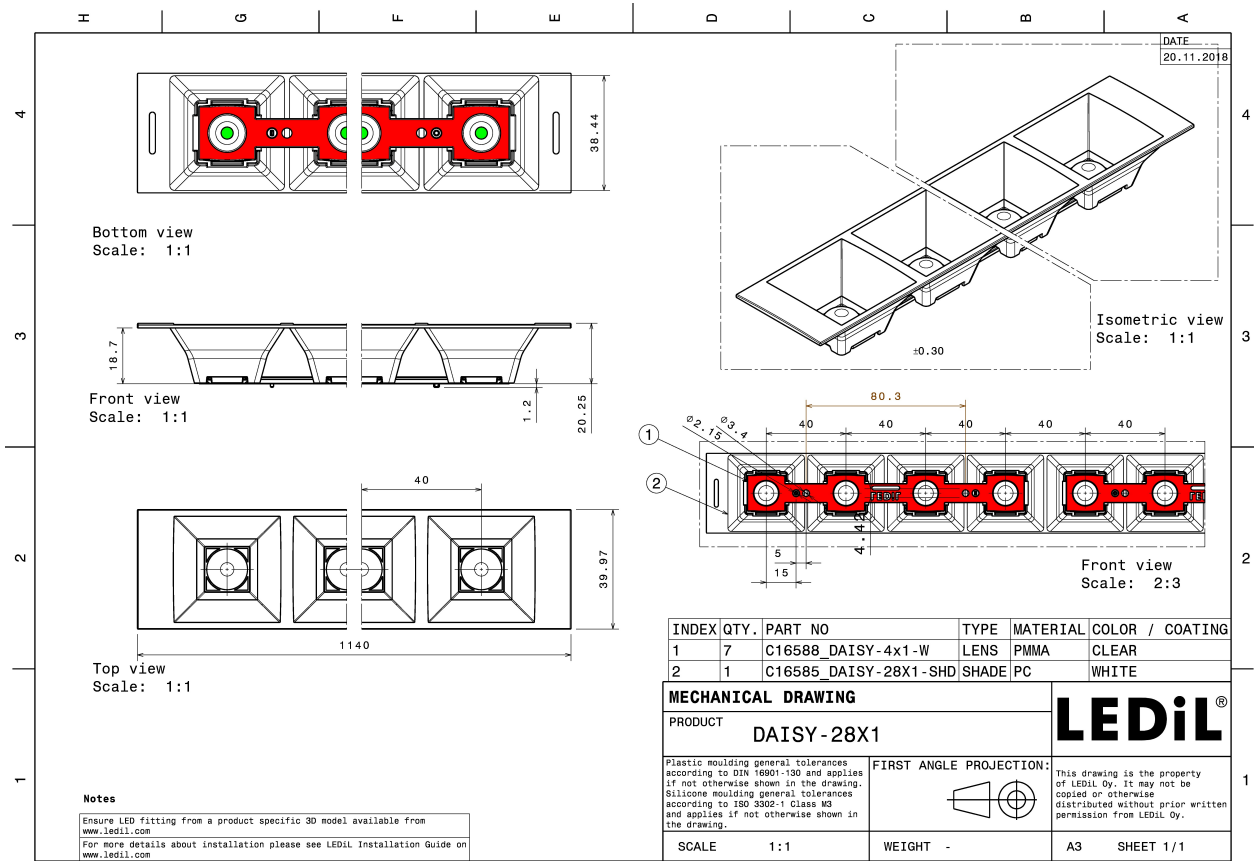
ORDERING INFORMATION:

Quantities for one set:

Linear lens	7
Shade	1



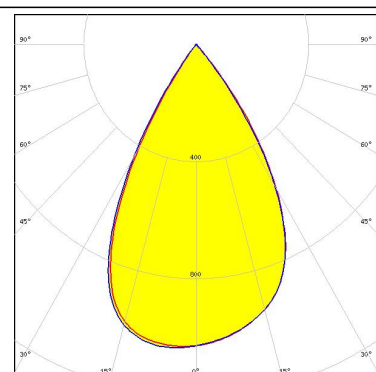
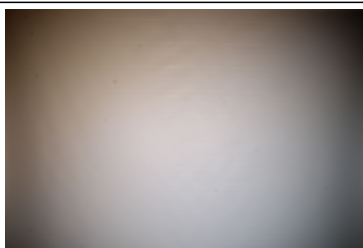
Component		Qty in box	MOQ	MPQ	Box weight (kg)
C16588_DAISY-4X1-W » Box size: 480 x 280 x 300 mm	Linear lens	504	336	21	6.3
C17527_DAISY-28X1-SHD-MET » Box size: 1185 x 385 x 140 mm	Shade	48	48	48	
C16783_DAISY-28X1-SHD-WHT » Box size: 1185 x 385 x 140 mm	Shade	48	48	48	8.0
C17537_DAISY-28X1-SHD-MET-MATT » Box size: 1185 x 385 x 140 mm	Shade	48	48	48	
C17481_DAISY-28X1-SHD-MATT » Box size: 1185 x 385 x 140 mm	Shade	48	48	48	
C16585_DAISY-28X1-SHD » Box size: 1185 x 385 x 140 mm	Shade	48	48	48	8.0
C17482_DAISY-28X1-SHD-WHT-MATT » Box size: 1185 x 385 x 140 mm	Shade	48	48	48	



PHOTOMETRIC DATA (MEASURED):

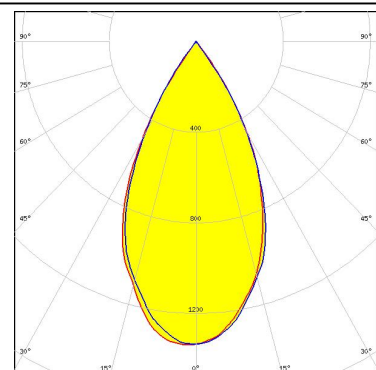
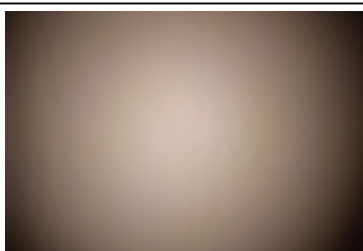
Helvar

LED LDL-iC-562-827-2000lm
 FWHM 60.0°
 Efficiency 88 %
 Peak intensity 1.040 cd/lm
 LEDs/each optic 1
 Light colour White
 Required components:
 C16585_DAISY-28X1-SHD



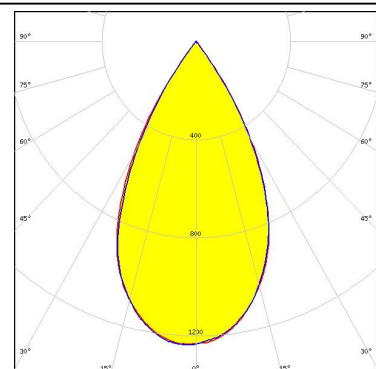
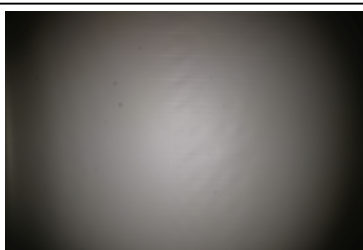
NICHIA

LED NF2W757G-MT (Tunable White)
 FWHM 53.0°
 Efficiency 91 %
 Peak intensity 1.339 cd/lm
 LEDs/each optic 1
 Light colour Tunable White
 Required components:
 C16585_DAISY-28X1-SHD



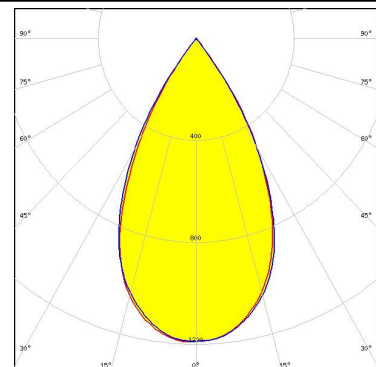
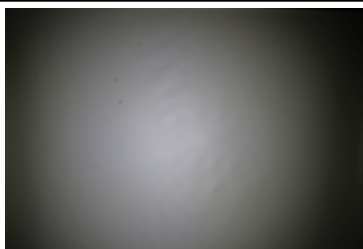
SAMSUNG

LED LM28xB Series
 FWHM 55.0°
 Efficiency 90 %
 Peak intensity 1.200 cd/lm
 LEDs/each optic 2
 Light colour White
 Required components:
 C16585_DAISY-28X1-SHD



SEOUL SEMICONDUCTOR

LED SEOUL DC 3528
 FWHM 56.0°
 Efficiency 90 %
 Peak intensity 1.200 cd/lm
 LEDs/each optic 2
 Light colour White
 Required components:
 C16585_DAISY-28X1-SHD



PHOTOMETRIC DATA (MEASURED):



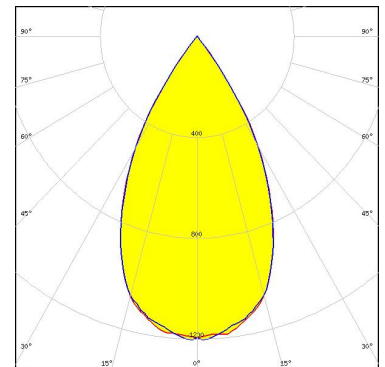
PHOTOMETRIC DATA (SIMULATED):



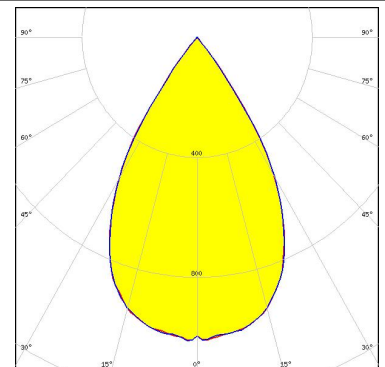
LED LUXEON 2835 Line
FWHM 51.0°
Efficiency 91 %
Peak intensity 1.394 cd/lm
LEDs/each optic 1
Light colour White
Required components:
C16585_DAISY-28X1-SHD



LED NF2W757G-MT (Tunable White)
FWHM 56.0°
Efficiency 91 %
Peak intensity 1.212 cd/lm
LEDs/each optic 2
Light colour Tunable White
Required components:
C16585_DAISY-28X1-SHD



LED NF2W757G-MT (Tunable White)
FWHM 62.0°
Efficiency 90 %
Peak intensity 1.019 cd/lm
LEDs/each optic 4
Light colour Tunable White
Required components:
C16585_DAISY-28X1-SHD



GENERAL INFORMATION:

NOTE: The typical beam angle will be changed by different color, chip size and chip position tolerance. The typical total beam angle is the full angle measured where the luminous intensity is half of the peak value.

MATERIALS:

As part of our continuous research and improvement processes, and to ensure the best possible quality and availability of our products, LEDiL reserves the right to change material grades without notice.

PRODUCT DATA USER AGREEMENT AND DISCLAIMER:

The measured data in the provided downloadable LEDiL Product Datasheets and Mechanical 2D-Drawings is rounded and provided as reference for planning. LEDiL Oy's optical specifications have been verified by conducting performance testing of the products in accordance with the company's quality system. The reported data are averaged results of multiple measurements with typical variation. LEDiL Oy reserves the right to without prior notification make changes and improvements to its products.

LEDiL Oy assumes neither warranty, nor guarantee nor any other liability of any kind for the contents and correctness of the provided data. The provided data has been generated with highest diligence but the provided data may in reality not represent the complete possible variation range of all intrinsic parameters. Therefore, in certain cases a deviation from the provided data could occur.

LEDiL Oy reserves the right to undertake technical changes of its products without further notification which could lead to changes in the provided data. LEDiL Oy assumes no liability of any kind for the possible deviation from any provided data or any other damage resulting from the usage of the provided data.

The user agrees to this disclaimer and user agreement with the download or usage of the provided files.

LEDiL Oy

Joensuunkatu 13
FI-24240 SALO
Finland

LEDiL Inc.

228 West Page Street
Suite D
Sycamore IL 60178
USA

Local sales and technical support

[www.ledil.com/
where_to_buy](http://www.ledil.com/where_to_buy)

Shipping locations

Salo, Finland
Hong Kong, China

Distribution Partners

[www.ledil.com/
where_to_buy](http://www.ledil.com/where_to_buy)