

DRIVING CURRENT VS LUMEN OUTPUT SPECIFICATION

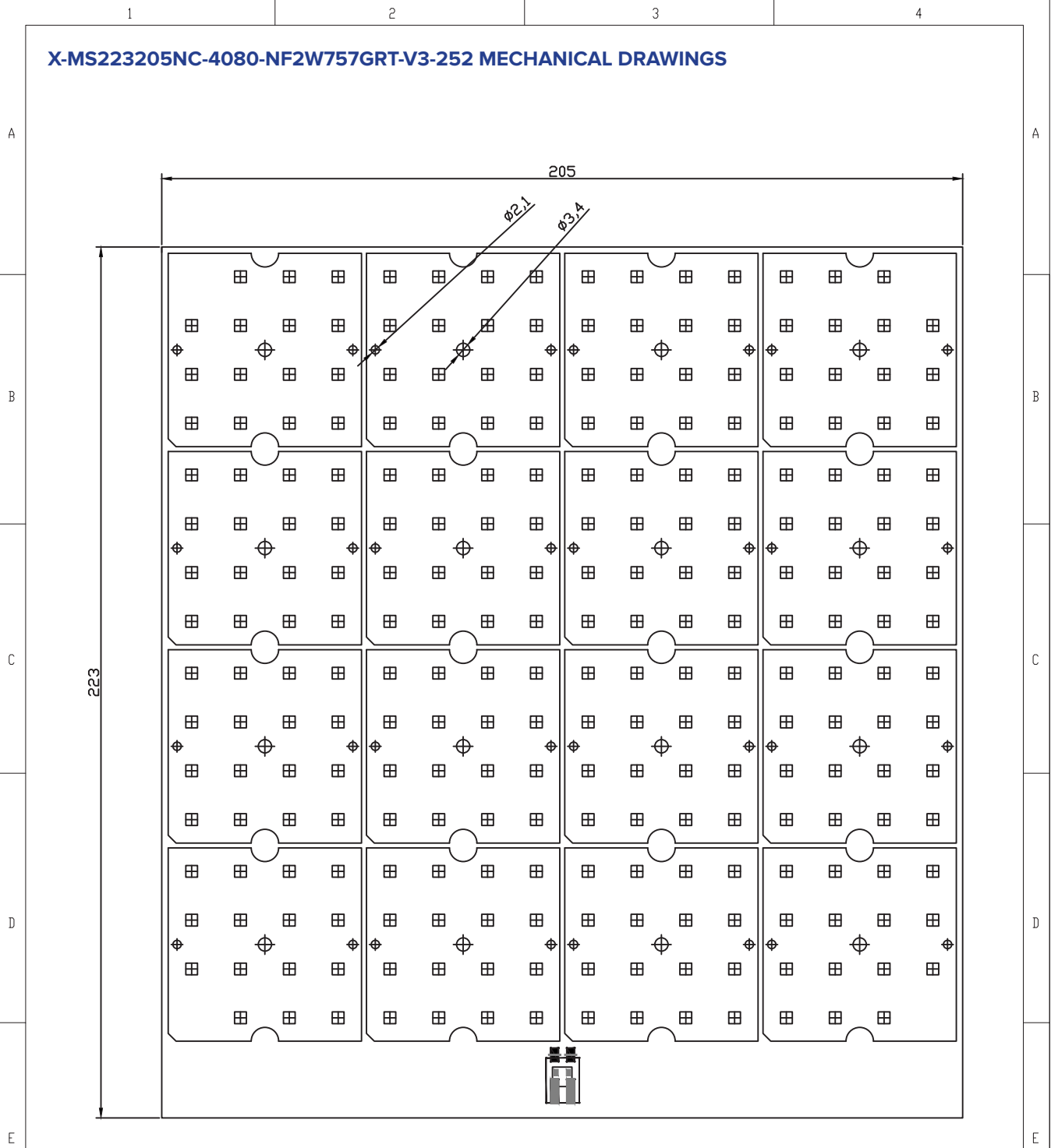
Common Characteristic [@Tj : 85°C] ;			
LED Brand & Type	X-MS223205NC-4080-NFxx-252		Electrical Connection
PCB Material	ALU		
Operating Temperature (°C)	-40 ~ +85	Parallel	6
Storage Temperature (°C)	-40 ~ +55	Series	42
Thermal Conductivity (W/m-K)	1>	LED Quantity	252
LED	NC-NF2W757GRT-V3		
Correlated Color Temperature (CCT)	4000K		
Color Rendering Index (CRI)	80+		
Module Operating Voltage (V)	231	244	260
Module Operating Current (mA)	500	700	1050
Branch Operating Current (mA)	83	117	175
Module Power (W)	116	171	273
Module Light Output (lm)	20328	28136	38279
Module Efficiency (lm/W)	176	165	140

The table below shows how to Module Light Output changes depending on CCT (°K)

LED	Lumen Output Multiplier				
	2700°K (CRI 80)	3000°K (CRI 80)	4000°K (CRI 80)	5000°K (CRI 80)	6500°K (CRI 80)
NC-NF2W757GRT-V3	0,875	0,916	1	1	1

Relative luminous intensity versus CCT (°K)

X-MS223205NC-4080-NF2W757GRT-V3-252 MECHANICAL DRAWINGS



SERBEST ÖLÇÜ TOLERANSLARI -DIN 2768-1 / General Tolerances for linear and angular dimensions (DIN ISO 2768-1)

0.5 up to 3mm	± 0.1	over 3 up to 6mm	± 0.1	over 6 up to 30mm	± 0.2	over 30 up to 120mm	± 0.3	over 120 up to 400mm	± 0.5	over 400 up to 1000mm	± 0.8
---------------	-------	------------------	-------	-------------------	-------	---------------------	-------	----------------------	-------	-----------------------	-------

Stock code No : XXXX	MALZEME (MATERIAL)	AGIRLIK (WEIGHT)	BLÇEK / SCALE	A4
Revision : 00	PC			
Date: 13.11.2018	PARÇA NO (PART NO)	XXXXX		
Sheet : 1				
Drawn By : D. ALTUN				
Checked By : D. SANATSEVER				
Approved By : M. CINAR				

TLS Teknoloji Sanayi ve Dis Ticaret A.S This drawing is our property. It cant be reproduced or communicated without our written agreement.

LEGAL NOTICE

Product information provided by TLS Teknoloji Sistemleri San ve Dış Tic AŞ ("TLS") in this document is believed to be correct and accurate. TLS reserves the right to change/correct the specifications and other data or information relating to products without notice but TLS accepts no liability for errors that may appear in this document, howsoever occurring, or liability arising from the use or application of any information or data provided herein. Neither the supply of such information, nor the purchase or use of products conveys any licence or permission under patent, copyright, trademark or other intellectual property right of TLS or third parties.

Products sold by TLS are subject to its standard Terms and Conditions of Sale that are available on request. No warranty is given that products do not infringe the intellectual property rights of third parties, and furthermore, the use of products in certain ways or in combination with TLS, or non-TLS furnished equipments/components may infringe intellectual property rights of TLS.

The purpose of this document is to provide information only and it may not be used, applied or reproduced (in whole or in part) for any purpose nor be taken as a representation relating to the products in question. No warranty or guarantee express or implied is made concerning the capability, performance or suitability of any product, and information concerning possible applications or methods of use is provided for guidance only and not as a recommendation. The user is solely responsible for determining the performance and suitability of the product in any application and checking that any specification or data it seeks to rely on has not been superseded.

Products are intended for normal commercial applications. For applications requiring unusual environmental requirements, extended temperature range, or high reliability capability (e.g. military, or medical applications), special processing/testing/conditions of sale may be available on application to TLS.

CONTACT

TLS Teknoloji Sistemleri San ve Dış Tic AŞ

Akçaburgaz Mahallesi 3080. Sokak No:5 Esenyurt / İstanbul / TURKEY

info@tsteknoloji.com
+90 444 27 33